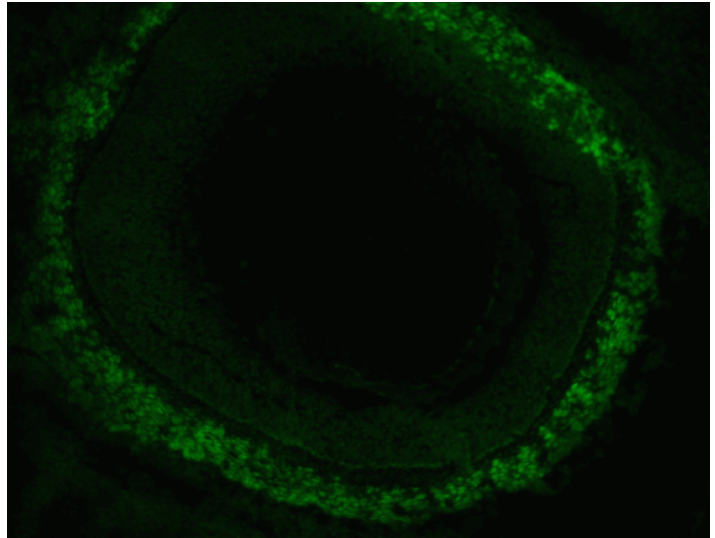


Specification Sheet

Rabbit Anti-Pitx2^{ABC} Antibody

Product Number: **PA 1020-100**



Cryosectioned E13.5 mouse eye. Dilution 1/1000.
Stained for 1 hour 30 minutes at room temperature.

- Specificity:** Recognizes Pitx2 isoforms A, B and C. Human and rodent reactive. Reactivity with other species has not been confirmed.
- Product Description:** Antibody reactive with isoforms A, B and C of the Paired-like homeodomain transcription factor 2 protein. Rabbit polyclonal antibody raised against a synthetic peptide conjugated to a carrier molecule.
- Application:** Immunohistochemistry, Western Blot and ELISA. Recommended dilution 1/1000. Optimal dilutions must be determined by user.
- Size:** 100ug
- Form:** Affinity purified antibody. Shipped in 1xPBS, pH 7.2
- Storage instruction:** Store at +4°C after aliquoting and diluting. For long term storage at -20°C. Avoid repeated freeze/thaw cycles.
- Note:** During shipment, small volumes will occasionally become entrapped in the seal of the vial product. We recommend briefly centrifuging the vial in a tabletop centrifuge to dislodge any liquid in the container's cap.